



Happy New Year!

Thank you to everyone who took part in the Christmas Light Switch On event held on 22nd November. A 'snowy' Cranleigh High Street came alive with a variety of activities, including music, dance and demonstrations, and it was wonderful to see so many people enjoying themselves.

Special thanks go to Roger Coupe and the local business community whose generosity enabled the Christmas lights to be extended further along the High Street and to Gemma Radford, the Parish Council Event Co-ordinator, who brought the event together.



Gemma's role is to help co-ordinate local events in Cranleigh with the aim of helping to keep the High Street a vibrant place to visit. She works closely with the local community organisations and businesses. During the coming year she hopes to work more closely with the retailers to find out what they would like to get involved in.

Gemma is keen to hear feedback about events during 2014 and to find out what the community would like to get involved with in 2015.

Gemma will be holding drop in sessions in the Parish Council Offices on Thursday 8th January 2015 between 5.30pm and 7pm and on Thursday 29th January 2015 between 9.30am and 11am so please come along and tell her about your event and see if we can work together. If you can't make the drop in sessions please e-mail her on cranleighcoordinator@cranleighpc.org or telephone 07795 120761.

Our next large event will be Spring into Cranleigh on Saturday 2nd May 2015
On Monday 9th March 2015 the Parish Council will take part in 'Fly the Flag for the Commonwealth' – more details are available on the Cranleigh Parish Council website www.cranleighpc.org.

For all events see the Cranleigh Village website www.cranleighvillage.net, or if you have ideas that you would like us to consider, please get in touch!



Parish Precept

The Parish Council precept for 2015/16 of £275,594 represents an increase of 1.25% at Council Tax Band D payment (67pence) on last year. This year's Band D payment will be £54.58.

The Parish Precept is money collected from Waverley Borough Council to cover the running costs of the Parish Council. The Parish Council provides a range of services locally including Snoxhall Fields, Snoxhall Pavilion, Allotments, Village Hall, Cemetery, Public Conveniences, Youth Café, Youth Centre, Planning, Events, a small Grants budget and an administrative centre. Hiring out our facilities and interest on investments brings in a modest income.



The final precept is made up as follows:-

	Expenditure £	Income £
Hires and interest on investment		75,704
Running costs	366,016	
Asset replacement	20,644	
Capital items	23,255	
Revenue reserve	50,132	
Unused funds		15,100
Revenue reserve 2014/15		60,536
Grants from Waverley Borough Council		33,113
	460,047	184,453
Final precept		275,594

Within the 2015/16 budget, £5,000 has been set aside towards the Neighbourhood Plan, £9,600 for double glazing at the Parish Council Office as a measure to reduce energy bills, £4,875 towards election costs, £2,750 towards gutter repairs at the Youth Centre and £1,500 towards a scaffold tower and training, to allow staff to work safely at height. £3,400 has been allocated to allow necessary repairs to the pathway on Snoxhall Fields leading to Village Way and repairing potholes on the Access Road to Snoxhall where it crosses the Downs Link. £7,000 has been set aside to replace machinery, fencing, waste bins and CCTV at Snoxhall Fields. £3,000 has been set aside to address issues with the large swings in the Play Park. £4,244 has been allocated to the Village Hall to undertake decoration, a replacement boiler and the PA System. Finally £1,000 has been set aside to replace the garden tractor at the Cemetery.

The fees for the Village Hall will remain the same in 2015/16 as this year, but other fees have increased by 1.5%. A full copy of the budget is available on the Parish Council website www.cranleighpc.org.

Did you know?

Local people can have their say by responding to consultations published by various local authorities.

The deadline for responses to the Surrey County Council Public Transport Review, which can be found at www.surreycc.gov.uk/transportreview is Monday 2nd February 2015.

Other consultations may be found on Waverley Borough Council, Surrey County Council and Surrey Police websites. If you are not happy with local services, this is your opportunity to make your views known.

Cranleigh Neighbourhood Plan

The Parish Council would like to thank all of those residents who continue to work on Cranleigh's Neighbourhood Plan. We are aware that there has not been a great deal of information from the Neighbourhood Plan Group recently, but there is still a lot of hard work going on! The next Steering Group Meeting is on 5th January at 7.30pm in the Parish Council Office. Please look out for information on our website and the notice boards in the New Year. If you would like to get involved, please contact the Clerk at the Parish Council Office. E-mail: clerk@cranleighpc.org. Telephone 01483 272311.



Cranleigh Neighbourhood Plan

MAY 2015 - YOUR COMMUNITY NEEDS YOU!!

Are you concerned about your local area?

Do you want to represent the views of local people?

Do you want to contribute your business or personal skills and expertise?

Are you passionate about services provided to your community?

Become a Local Councillor: Make a difference

Reduction in Local Government funding may see services you take for granted reduced in the future. Your Parish Council could step in and fill the void in your community – to do this it will need your skills and enthusiasm.

Elections for Parish Councils will be held in **May 2015**

If you would like to make a difference and be involved in shaping the future of the local community...
...why not stand for election?

Contact the Parish Council and find out what being a Councillor is all about, or take a look at the Parish Council website www.cranleighpc.org for information from Waverley Borough Council.



Who does what in Cranleigh?**.....an easy guide****Cranleigh Parish Council**www.cranleighpc.org**01483 272311**

- Allotments at Elmbridge Road and Beryl Harvey Field
- Annual Parish Meeting
- Conservation Area at Snoxhall
- Dewlands Lane Cemetery
- Events co-ordination
- Grants – local and capital grants only
- High Street Flowerbeds
- Notice Boards in Cranleigh*
- Parish Council Offices
- Public Conveniences
- Snoxhall Fields
- Snoxhall Play Park
- Snoxhall Pavilion
- Tennis Courts
- Village Hall
- Youth Café
- Youth Centre

Waverley Borough Councilwww.waverley.gov.uk**01483 523333**

- Abandoned Vehicles
- Building Control
- Car Parks and Fines
- Commons
- Council Tax Enquiries
- Electoral Registration
- Gypsies and Travellers
- Housing/ Homelessness
- Leisure Centres
- Licensing
- Noise Pollution
- Pest Control
- Planning
- Queensway and Lashmere Playgrounds/ Skate Park
- Recycling/ Refuse/Special Collections
- Street Cleaning/ Litter
- Taxi/Private Hire Licensing

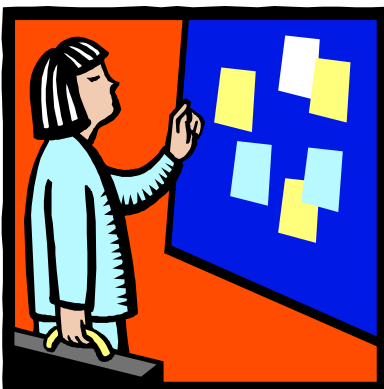
Surrey County Councilwww.surreycc.gov.uk**08456 009009**

- Education
- Environment
- Footways
- Highways
- Libraries
- Minerals
- Street Lighting
- Social Services
- Transport
- Trading Standards
- Waste Disposal
- On street parking and fines

Surrey Policewww.surrey.police.uk**101 or 01483 571212**

In an emergency use 999

Reports can be made to Cranleigh Parish Council, Waverley Borough Council, Surrey County Council or Surrey Police using their websites. You are advised to report incidents directly to the appropriate body above so that all of the relevant facts can be given.



The open public notice boards on the side of the Village Hall and outside the Post Office in Cranleigh are available for local organisations to promote local community events. There is limited room on the notice boards so use them considerately, do not use staples to fix the notices and take down notices when the event is over.

The closed notice board on Fountain Square (outside the Richard Onslow) is also for use to promote community events. Please contact the Parish Council to obtain the key.

Larger text versions are available on request

Editor – Pauline Whitehead BA (Hons) FILCM, Clerk to the Council.

Available from, the Parish Council Office, Library, Village Hall, Arts Centre and downloadable from the website www.cranleighpc.org. A copy is displayed on the Parish Notice Board.

THIS NEWSLETTER CAN BE E-MAILED DIRECT TO YOU, PLEASE LET US KNOW YOUR E-MAIL ADDRESS SO THAT IT CAN BE ADDED TO THE CIRCULATION LIST.

Your Councillors contact details

CRANLEIGH EAST

Cllr Brian Cheesman
VICE CHAIRMAN



01483 273293

Cllr Richard Cole



07718 588940

Cllr Ken Reed



01483 271896

Cllr Ruth Reed



01483 271896

Vacancy

CRANLEIGH WEST

Cllr Patricia Ellis



01483 272929

Cllr David Gill



01483 271565

Cllr Rosemary
Burbridge



01483 273277

CRANLEIGH NORTH

Cllr Mary
Foryszewski



01483 273020

ELMBRIDGE

Cllr Robert Wilson



01483 542034

CRANLEIGH WEST

Cllr Brian Ellis
CHAIRMAN



01483 272929

CRANLEIGH RURAL

Cllr Brian Arendell



01483 273204

Useful Contacts

Cranleigh Parish Council
Village Way
Cranleigh
GU6 8AF
Telephone 01483 272311
Website:- www.cranleighpc.org

Graffiti Hotline
Telephone 01483 523425
Website:- GraffitiHotline.co.uk

Surrey Police
Telephone - 101 or 01483 571212
(Emergencies 999)
Website: www.surrey.police.uk

**Automatic External Defibrillators for use in the
community are sited in**

**The Richard Onslow, The Cranley Hotel,
The White Hart, The Three Horseshoes
and The Park Hatch.**

St John Ambulance can arrange training sessions to
members of the public who would like to learn how
to use them.

Dates for your diary

Members of the Public are welcome to all Parish Council and Committee Meetings which are held in the Council Offices, in Village Way.

Meetings start promptly, usually at 7.00pm, with the first fifteen minutes available for residents or those who work in the Parish to ask questions about the work of the Council to the councillors.

Monday January 12 th 2015	Planning Committee
Thursday 15 th January 2015	Parish Council
Monday 26 th January 2015	Planning Committee
Monday 16 th February 2015	Planning Committee
Thursday 19 th February 2015	Parish Council
Thursday 5 th March 2015	Cemetery Committee 6pm
Thursday 5 th March 2015	Village Hall Committee 7pm
Monday 9 th March 2015	Planning Committee
Thursday 19 th March 2015	Parish Council
Monday 30 th March 2015	Planning Committee
Thursday 16 th April 2015	Parish Council

For details of all our meetings please visit the calendar section of our website www.cranleighpc.org. Notices of meetings are displayed in our noticeboard at the rear of the Village Hall and on the Parish Council Office door.

Parish Council Staff

The Parish Council employs 6 full time and 5 part time members of staff to look after its business and buildings.

Clerk and Responsible Finance Officer	Pauline Whitehead BA (Hons) FILCM
Assistant Clerk	Vivien Edwards.
Administration Clerk	Louise Glazier.
Finance Assistant	Jitendra Chudasama
Events Co-ordinator	Gemma Radford
Youth Café Co-ordinator	Jason Steadman
Youth Café Assistant	Rachael Nicholson
Grounds Manager	Nick Barnett.
Assistant to the Grounds Manager	Andy Burke.
Sexton	Kevin Cave.
General Services Worker	Kane Barnett

Office opening hours

The Parish Council Offices are situated on **Village Way opposite the Leisure Centre**. We open every weekday between **9.30am to 12.30pm**. If you wish to see a particular member of staff it is advisable to telephone beforehand to make an appointment to avoid disappointment.

Cranleigh Parish Council, Village Way, Cranleigh, GU6 8AF. Telephone 01483 272311.

